



Fusion 360

Task 2

Sketch



Objectives

By the end of this task, you will:

- Have learnt how to start Fusion 360.
- Be able to attach a canvas.
- Know how to create a sketch profile of the lampshade.

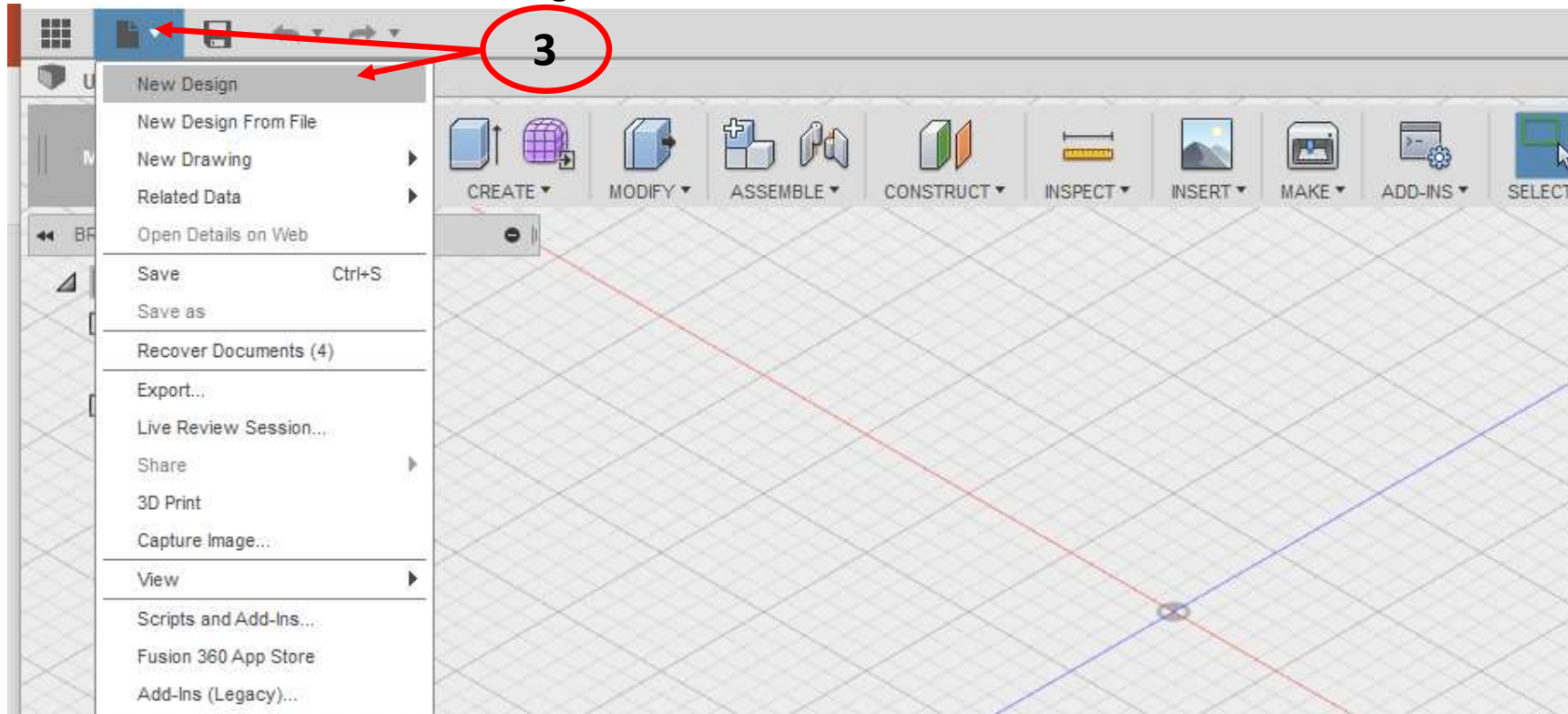
https://moeae87206-my.sharepoint.com/personal/felicity_dray_moe_gov_ae/_layouts/15/guestaccess.aspx?docid=0327d10fa7a1e4213822b2b97b303c8cd&authkey=AQrN7U4A9oLWOrideZGdQQM

Note: The Lampshade Design project and data sets are required for this lesson. If you have not created the project or uploaded the files, refer to the Getting Started section. (handout)



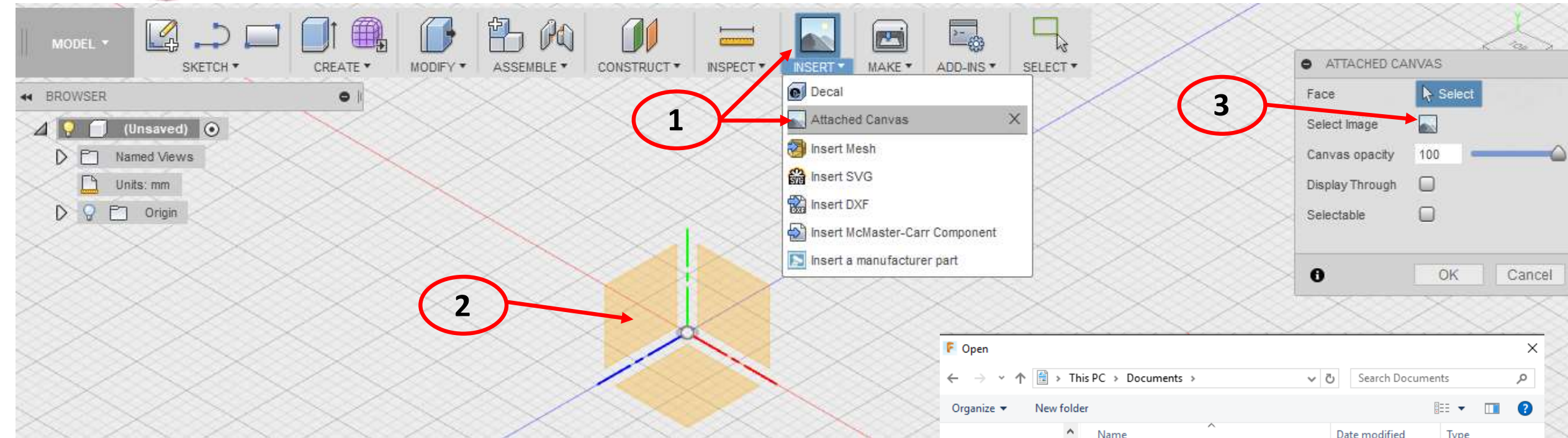
Step 1: Start Fusion 360

- 1. Start Fusion 360.
- 2. If required, sign in using your Autodesk ID
- 3. Select file > New Design

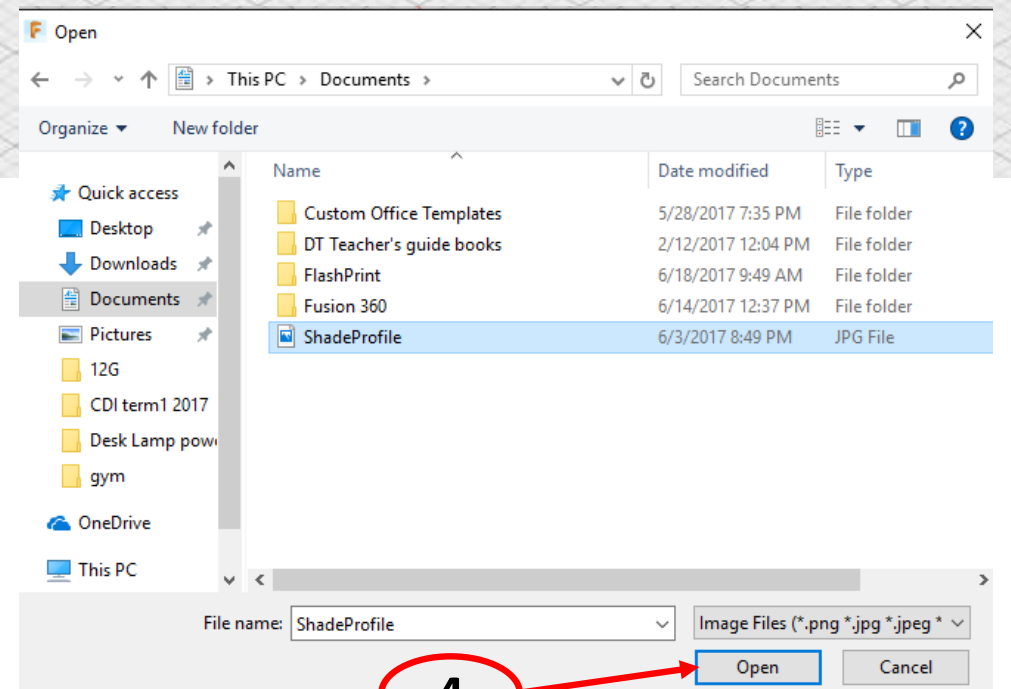




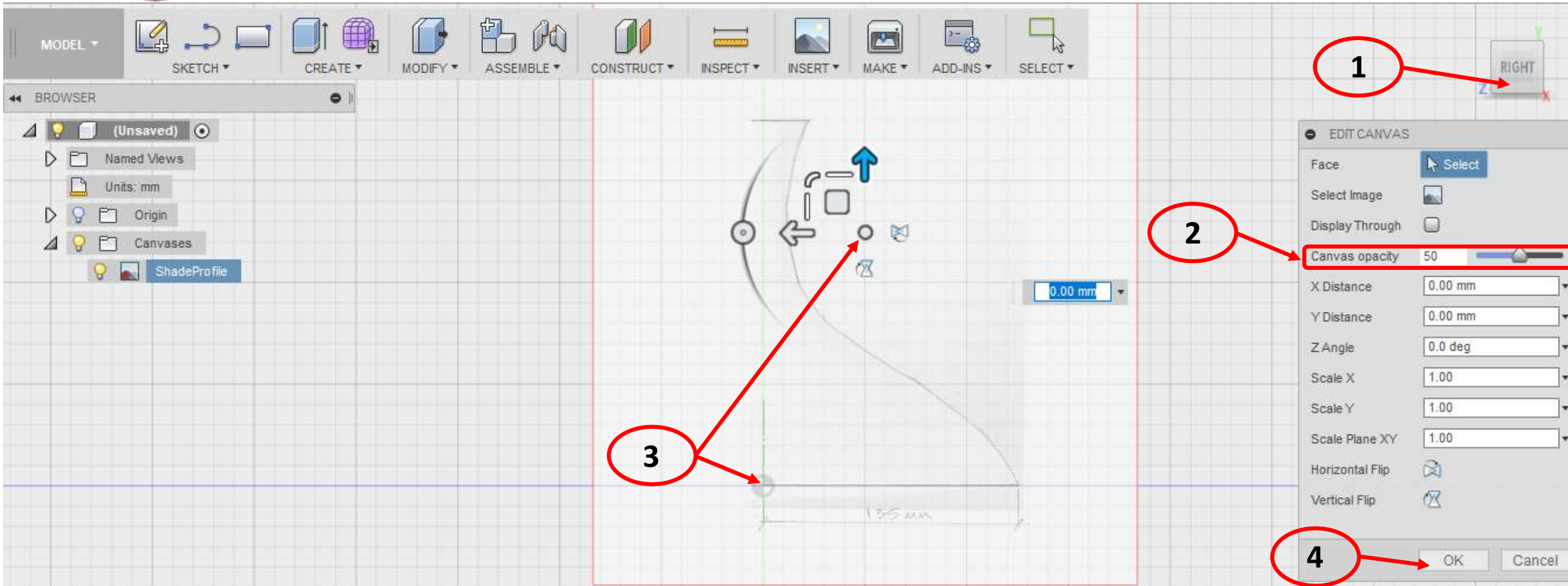
Step 2: Attach a Canvas



1. Click Insert > Attached Canvas.
2. Select a vertical plane.
3. Select the image icon in the dialogue box.
4. Select ShadeProfile file and open.

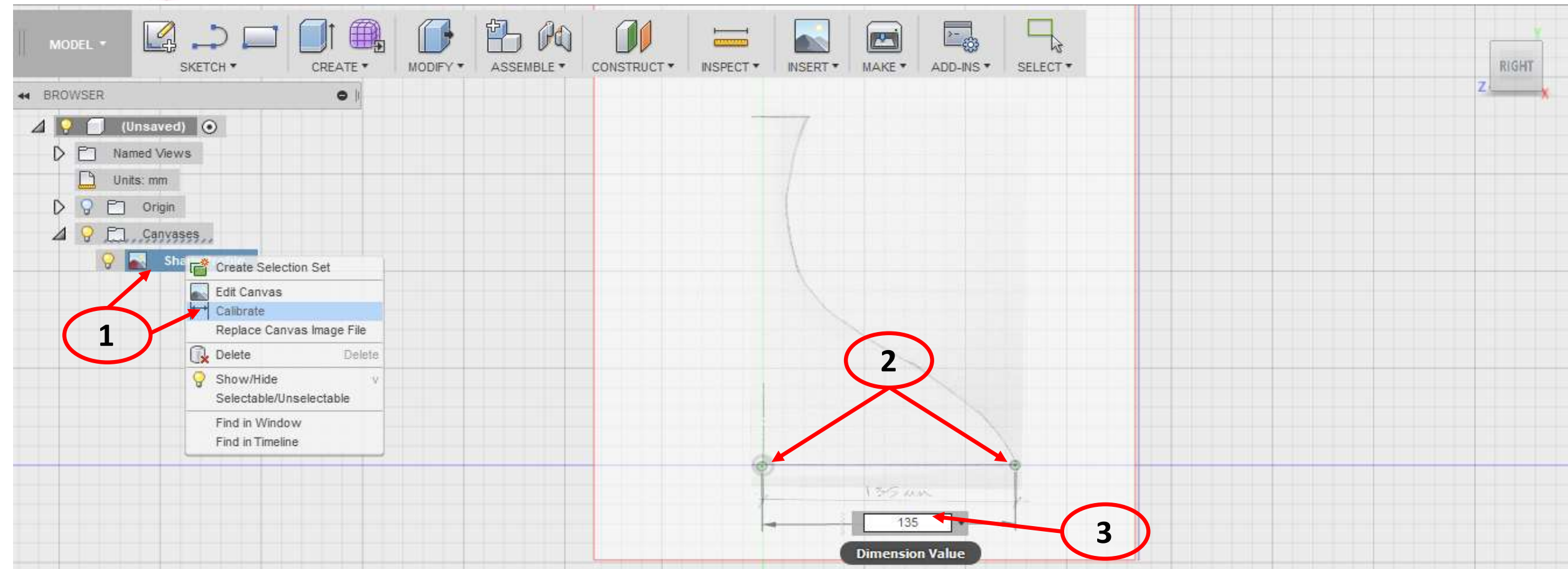


Step 2: Attach a Canvas



1. Use view cube to Look Directly at selected plane (right)
2. Change opacity to 50 in order to see Origin
3. Use the Triad (arrows) to rotate image if needed and drag to align bottom corner with origin.
4. Ok to finish and place canvas

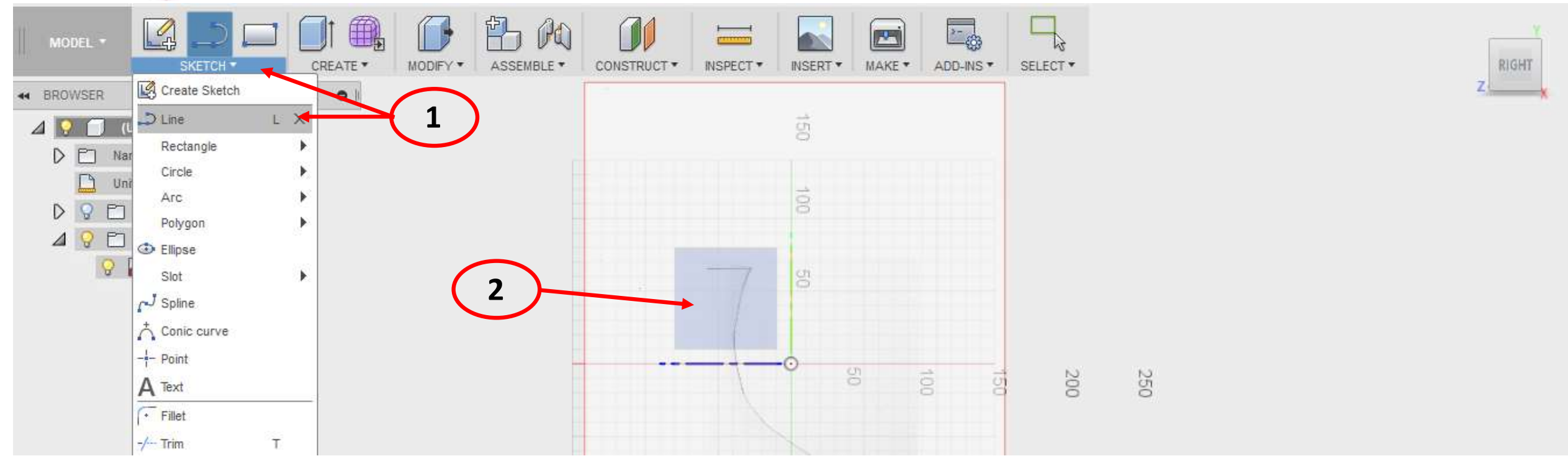
Step 2: Attach a Canvas



1. Expand Browser > right click Shade Profile > select calibrate
2. Click the two points as shown
3. Enter 135mm in dimension box
4. Right Click the Shade Profile again > select find in window to place canvas back in center.

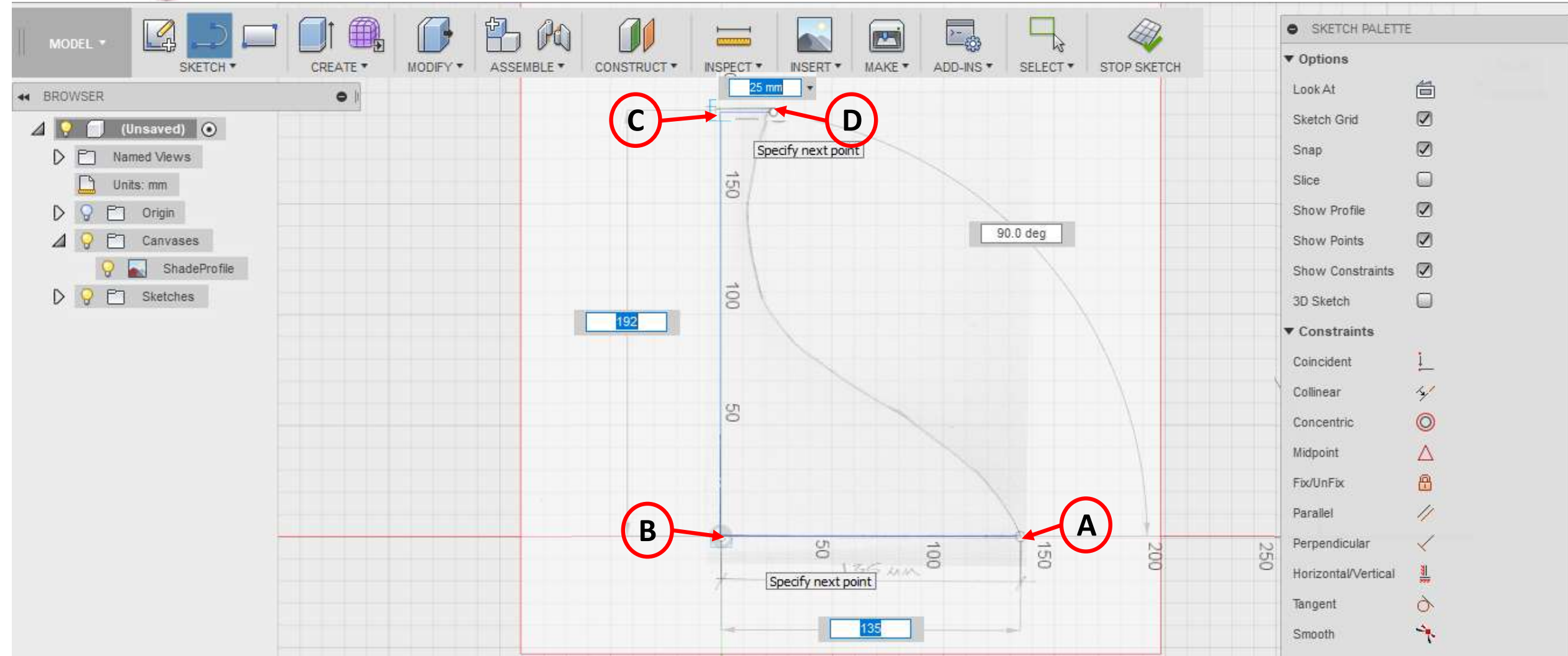


Step 3: Create a Sketch Profile of the Lampshade



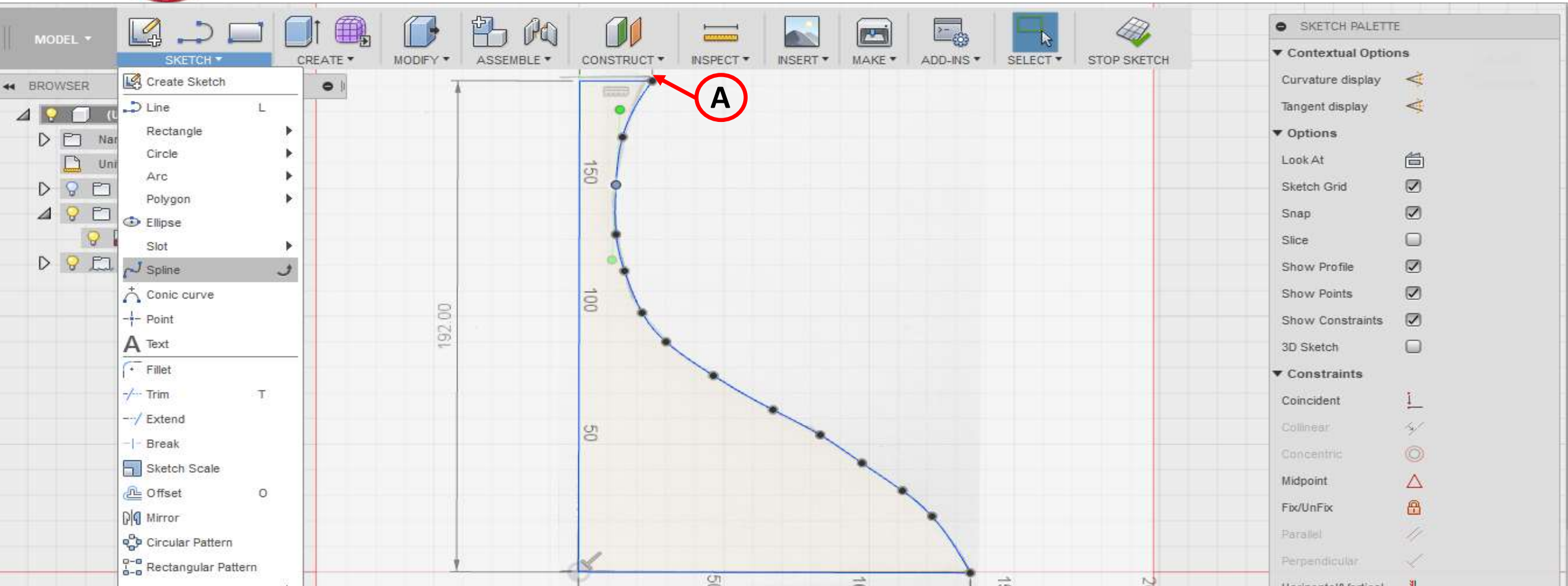
1. Select sketch > Line
2. Select the plane as shown

Step 3: Create a Sketch Profile of the Lampshade



1. Select point A > then select point B > Enter 135mm in Dimension Box.
2. Drag upwards and select point C > enter 192mm in Dimension Box.
3. Drag right and select Point D > enter 25mm in Dimension Box

Step 3: Create a Sketch Profile of the Lampshade



1. Select Sketch > Spline
2. Click at Point A to place a point
3. Now click on the curve every 15-20mm to complete the curved profile. (right Click and select ok to finish spline)
4. Click on any Spline point and drag to reshape and smooth curve > Stop Sketch when finished shaping spline.